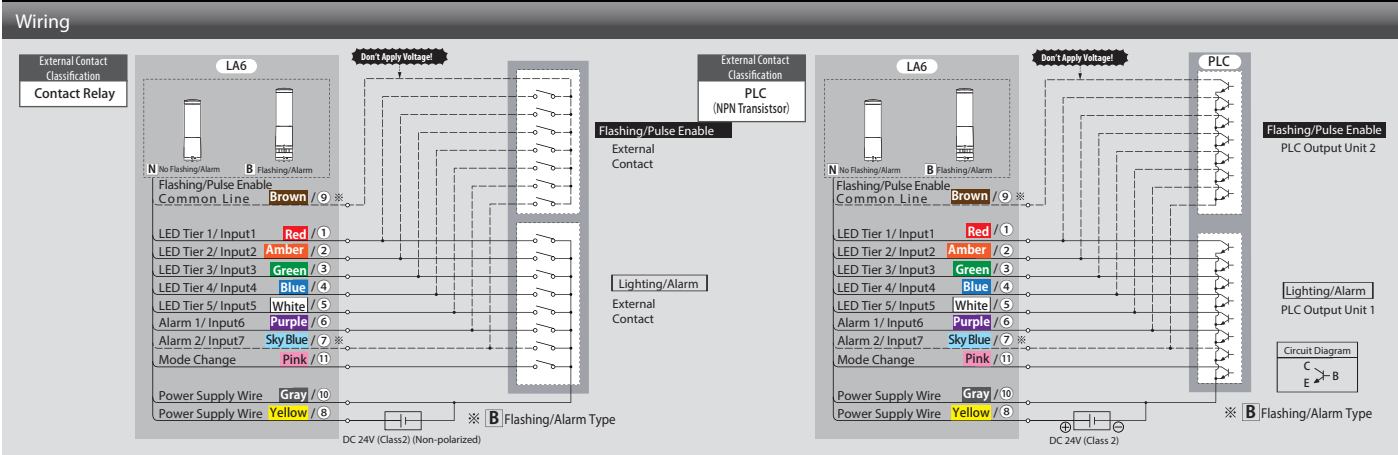
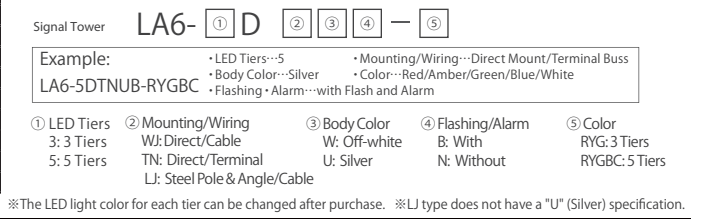
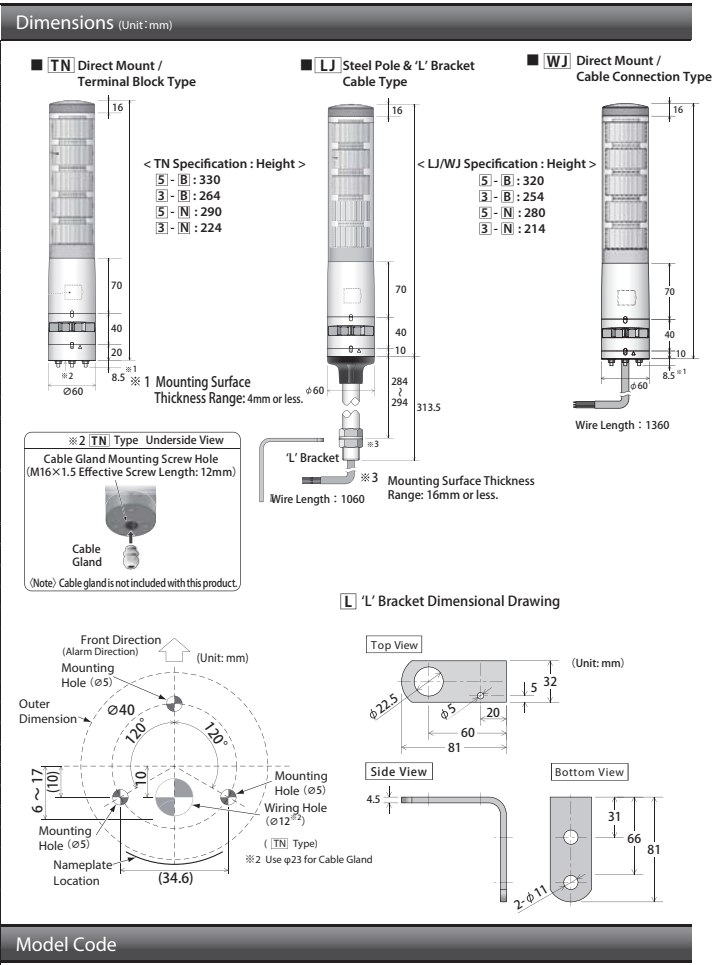


Specifications					
Model		LA6- □ D □ □ □ - □			
Rated Voltage		DC24V			
Operating Voltage Range		±10% of Rated Voltage			
Rated Power Consumption	Standard	LA6-5 D □ □ N-RYGB	5W	LA6-5 D □ □ B-RYGB	6.5W
		LA6-3D □ □ N-RYG	3.5W	LA6-3D □ □ B-RYG	4.5W
	Maximum	LA6-5 D □ □ N-YYYY	7W	LA6-5 D □ □ B-YYYY	8W
		LA6-3D □ □ N-YYY	4.5W	LA6-3D □ □ B-YY	5.5W
Test Condition		Power Consumption test with alarm set at Alarm Sound No.1 at maximum volume			
Signal Wire Current		Maximum 70mA			
Standby Current		Maximum 15mA			
Operating Ambient Temperature		-25℃ to +60℃			
Operating Humidity Range		Less than 90% RH (No Dew or Condensation)			
Storage Temperature Range		-25℃ to +60℃			
Storage Humidity Range		Less than 90% RH (No Dew or Condensation)			
Mounting Location		Indoor Only			
Mounting Direction		Upright/Inverted Direction			
Protection Rating		IP65 (With alarm: IP54) IEC 60529			
Test Condition		Installed in an upright position			
Vibration Resistance	LA6- □ □ LJ □ □	Sweep Durability: Total amplitude: 0.3 mmp-p (10 - 57.5 Hz), Acceleration: 20.0 m/s2 (57.5 - 150 Hz) Fixed pitch durability: Acceleration 20.0 m/s2			
	LA6- □ □ TN □ □	Sweep Durability: Total amplitude 0.3 mmp-p (10 - 57.5 Hz), Acceleration: 20.0 m/s2 (57.5 - 150 Hz) Fixed Vibration Frequency Durability: Acceleration 10.0 m/s2			
	LA6- □ □ WJ □ □				
	JIS C 60068-2-6:2010				
Test Condition		Tested while installed in an upright position			
Insulation Resistance		More than 1Mohm at DC500V between the power input lead and chassis.			
Withstand Voltage		500VAC for 1min between terminals and chassis without breaking insulation			
Display Color		red (1000 mcd) yellow (1700 mcd) green (2600 mcd) blue (1000 mcd) white (1250 mcd)			
(Typical Luminous Intensity)		Purple (800 mcd) pink (850 mcd) cyan (2150 mcd) lemon (2150 mcd) * Due to the characteristics of the LED elements, a variation in difference of the color tone and brightness of every product may occur.			
Flash Rate		60 ±2 fpm			
Alarm Sound (Typical Frequency)	No. 1	2400Hz Continuous beep sound		No. 2	2400Hz Rapid intermittent beep
	No. 3	2400Hz Long intermittent beep		No. 4	2400Hz Fast intermittent beep
	No. 5	3600Hz Continuous beep		No. 6	3600Hz Rapid intermittent beep
	No. 7	3600Hz Long intermittent beep		No. 8	3600Hz Fast intermittent beep
	No. 9	2400Hz & 3375Hz Multiplexed Beep		No. 10	2400Hz & 3600Hz Multiplexed Beep
	No. 11	4000Hz & 4800Hz Multiplexed Beep			
Sound Level		Maximum: 85dB			
Test Condition		Alarm Sound No.1 measured from the front direction of the alarm opening at 1m			
Volume Control		The set up button is the fourth step (Factory Default: Maximum). [Maximum] -> [-5dB drop from maximum (standard)] -> [-10dB drop from maximum (standard)] -> [OFF] (-> Returns to [Maximum])			
Data Transfer Interface	Main Unit	USB micro-B Terminal Female		USB2.0/1.1 Interface, Transmission Rate: USB2.0/1.1/1.0	
	Transfer Cable	Charge /Data Transfer Micro USB (not included); Connector: USB Male- USB (MicroB) male			
Application Software					
Exclusive Application Software (Downloadable from our Homepage)					
Mass (Tolerance 10%)	LA6-3DTN □ B	480g	LA6-3DLJ □ B	980g	LA6-3DWJ □ B 450g
	LA6-3DTN □ N	420g	LA6-3DLJ □ N	930g	LA6-3DWJ □ N 400g
	LA6-5 DTN □ B	590g	LA6-5 DLJ □ B	1090g	LA6-5 DWJ □ B 560g
	LA6-5 DTN □ N	530g	LA6-5 DLJ □ N	1040g	LA6-5 DWJ □ N 510g
Compliance Standards	EMC Directive (EN 61000-6-4, EN 61000-6-2)			RoHS Directive (EN 50581)	
	UL508, CSA-C22.2 No.14			KC (KN 61000-6-4, KN 61000-6-2)	
	FCC Part 15 SubpartB Class A			CE Marking	
Remarks		UL Recognized Component (File No.E215660)			



<http://www.patlite.com>

PATLITE Corporation
Inaba Bldg 4-11-14 Itachibori, Nishi-ku, Osaka, Japan 550-0012
International Division, Sales and Marketing Department
TEL: +81-6-7688-5400 FAX: +81-6-7688-5401 E-mail: overseas@patlite.co.jp

PATLITE (U.S.A.) Corporation
20130 S. Western Ave. Torrance, CA 90501, U.S.A.
TEL: +1-310-328-3222 FAX: +1-310-328-2676 E-mail: sales@patlite.com

PATLITE (SINGAPORE) PTE LTD
No.2 Leng Kee Road, #05-01 Thye Hong Centre, Singapore 159086
TEL: +65-6226-1111 FAX: +65-6324-1411 E-mail: sales@patlite.com.sg

PATLITE (CHINA) Corporation
Room 512, Jufeng Business Building, No.697-3 Lingshi Road, Shanghai China 200072
TEL: +86-21-6630-8969 FAX: +86-21-6630-8938 E-mail: sales@patlite.cn

CAUTION

To ensure correct use of these products, read the "Instruction Manual" prior to use. Failure to follow all safeguards can result in fire, electric shock, or other accidents.Specifications are subject to change without notice.

PATLITE Europe GmbH
Am Soeldnermoos 8, D-85399 Hallbergmoos, Germany
TEL:+49-811 9981 9770-0 FAX:+49-811 9981 9770-9 E-mail: info@patlite.eu

PATLITE KOREA CO., LTD.
A-2603, Daesung-D-POLIS, 543-1 Gasan-dong, Geumcheon-gu, Seoul, 153-719
TEL:+82-2-523-6636 FAX:+82-2-861-9919 E-mail: sales@patlite.co.kr

PATLITE TAIWAN CO., LTD.
7F. No. 91, Huayin St, Datong District Taipei, Taiwan R.O.C E-mail: info@patlite.tw
TEL:+886-(0)2-2555-1611 FAX:+886-(0)2-2555-1621

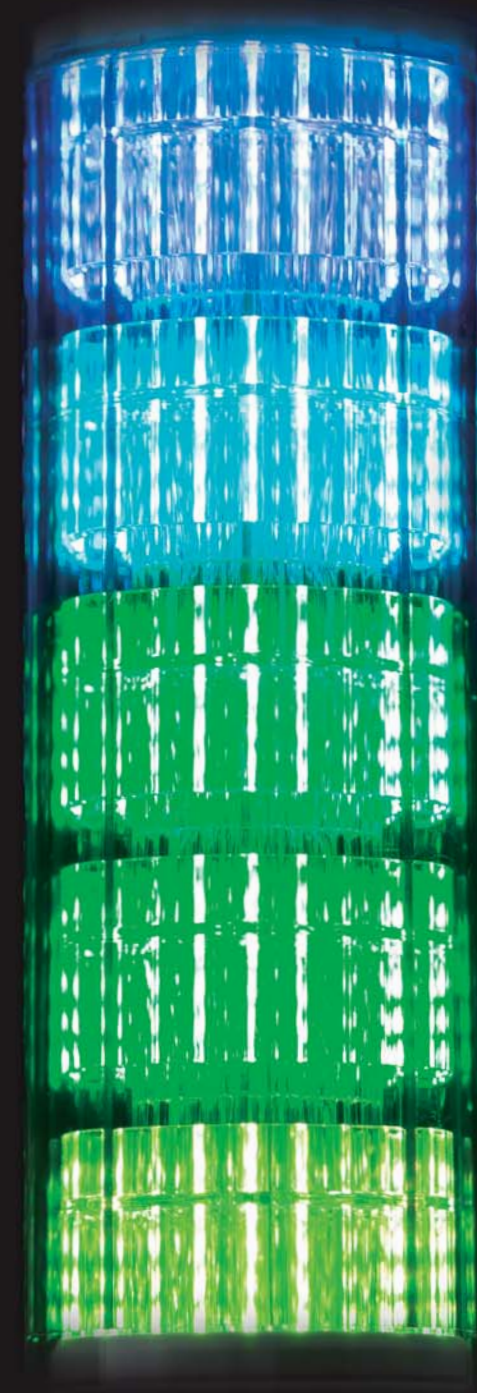
P.T. PATLITE INDONESIA (FACTORY)
LOT 321 Batamindo Industrial Park, Jalan Beringin Mukakuning, Batam 29433 Indonesia
TEL: +62-770-61-1123 FAX: +62-770-61-2444



PATLITE®
New Frontiers in Safety, Security and Comfort.

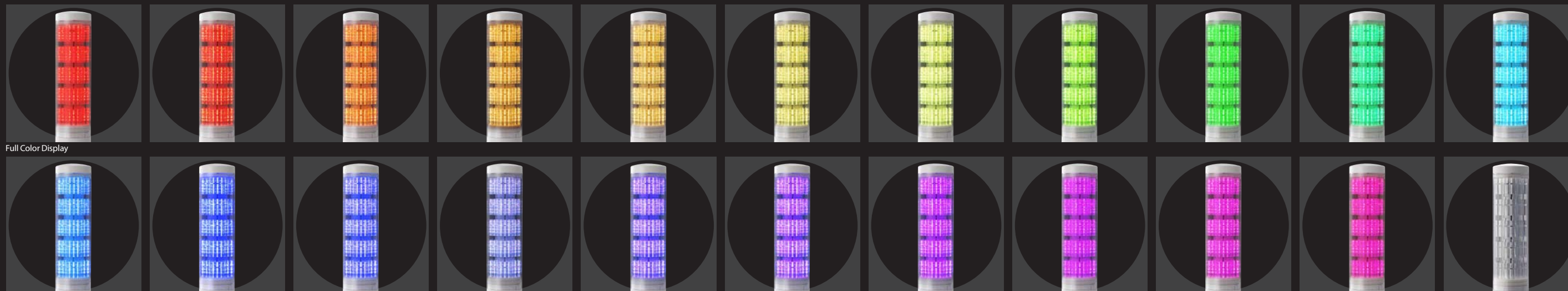
Signal Tower
LA6

See
More,
Do
More!



www.patlite.com

REVOLITE™



Full Color Display

See More, Do More!

Display a variety of colors in various ways to improve your processes.

PATLITE innovation continues with improved functionality to drive productivity, improve efficiencies, and reduce waste. One of our basic themes is to help you make continuous improvements in your process. In order to make your lives more "comfortable," our theme of "Visual Information" has been a persistent one by making things easier to do. Here, we introduce the LA6 multi-informational signal tower. It can be easily manipulated to display various colors and combination of colors in various ways in order to communicate "visual information" in a manner that is intuitive and easy to understand. The applications are endless. As a pioneer manufacturer of information display equipment, we will strive to provide society the best products in order to meet your expectations for "Safety, Security, and Comfort."

- Indicate abnormal conditions with a variety of color patterns.

Can freely set up multiple colors.

For example, a serious condition can be indicated with the "All-point Lighting" where the entire signal tower is the same color, thus conveying important information.

- Use "Operating Modes" to enhance a visual status condition.

The downloadable program can be used to make patterns change at set intervals so the signal tower can be used to count time or set a pace.

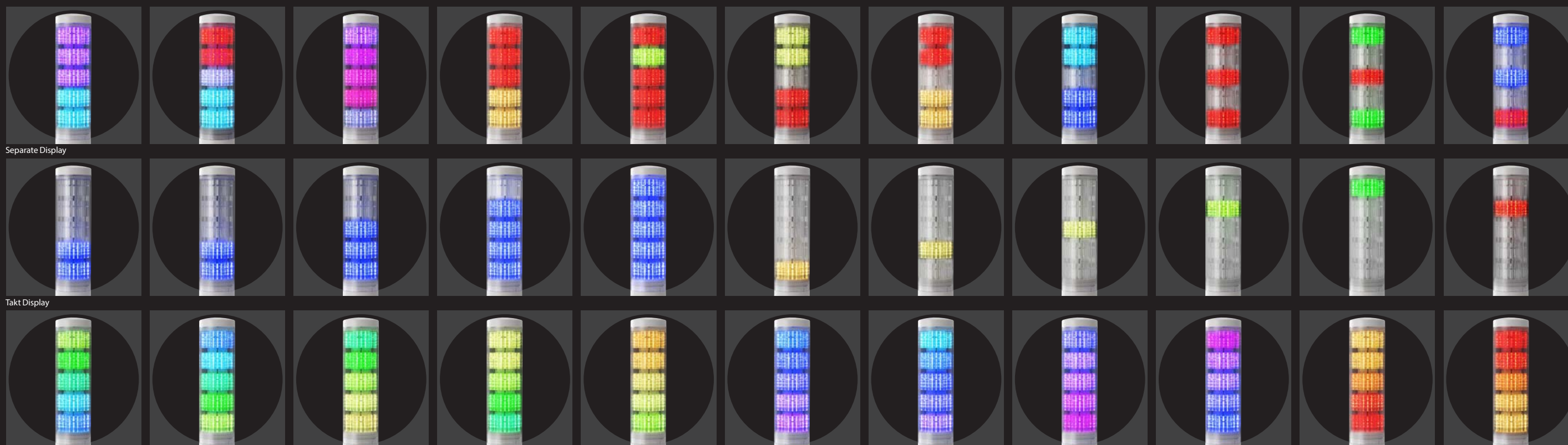
- Simple and easy to use complimentary programming software

The downloadable complimentary programming software can be used to easily control which colors are displayed and how they are to behave.

REVOLITE™

"More active, more flexible and beautiful"

"Revolite™" was made to redefine "light" and to make the environment more active, more beautiful, and more flexible.

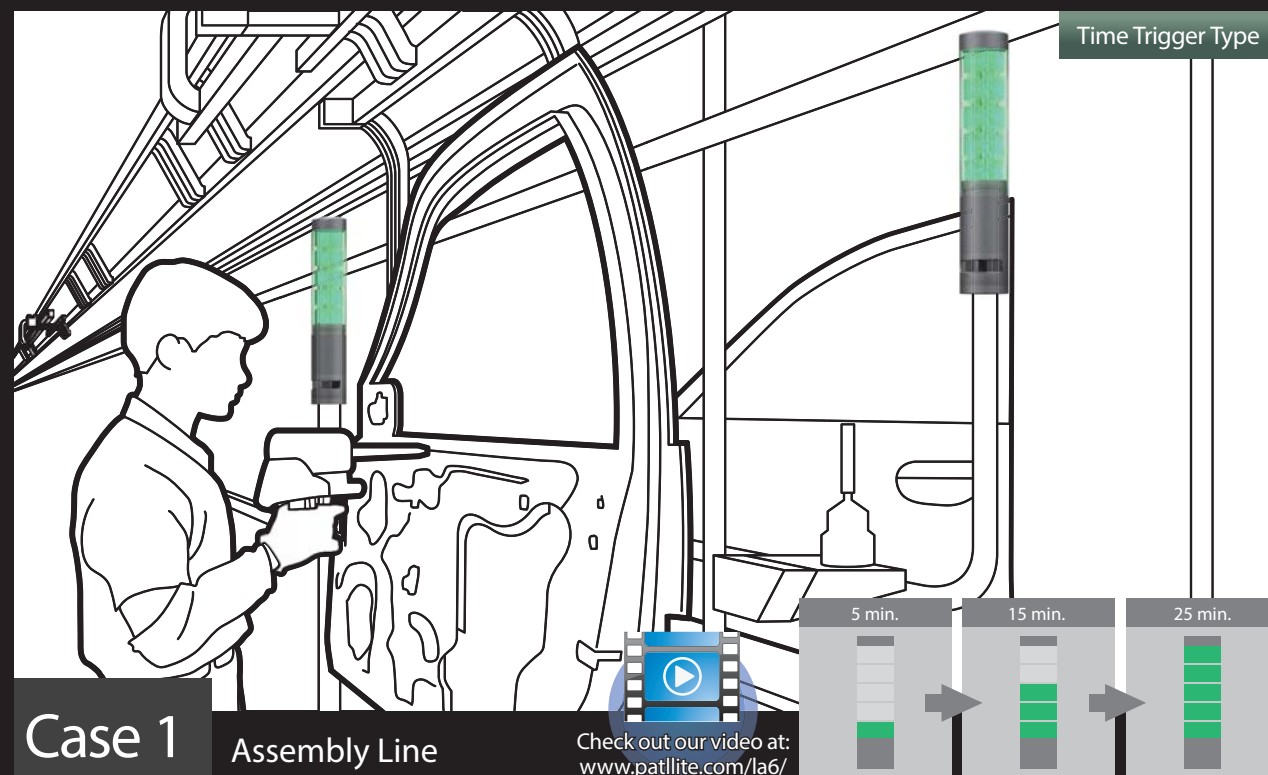


Separate Display

Takt Display

Gradation Display

See "preventive maintenance", "sign monitoring", and "production efficiency improvement"



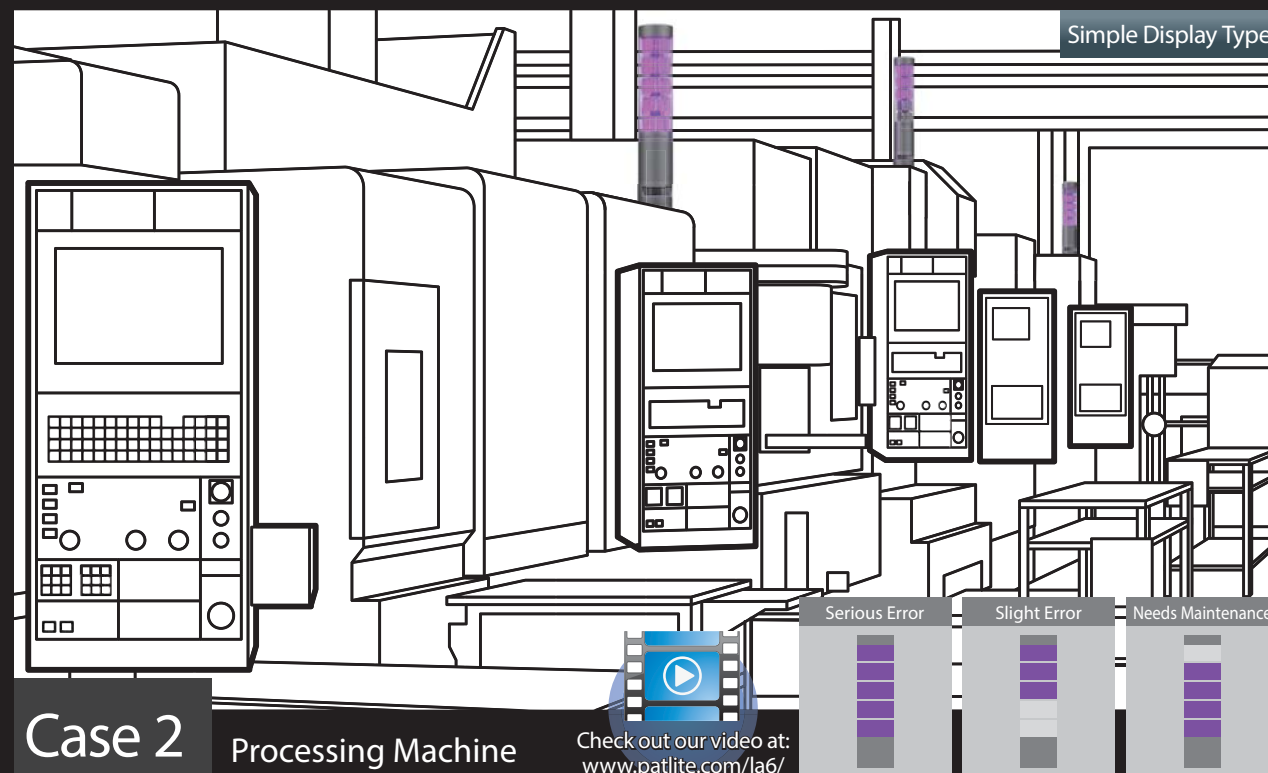
Case 1 Assembly Line

Check out our video at:
www.patllite.com/la6/

By rendering a visual task with the use of elapsed time in a product line, production can advance by checking whether work progress is relevant, and it contributes to an improvement in efficiency. Tact time setup does not require any external control programs, either.

Lighting Method: "Tact Time Display"

Display working hour progress with a section number.



Case 2 Processing Machine

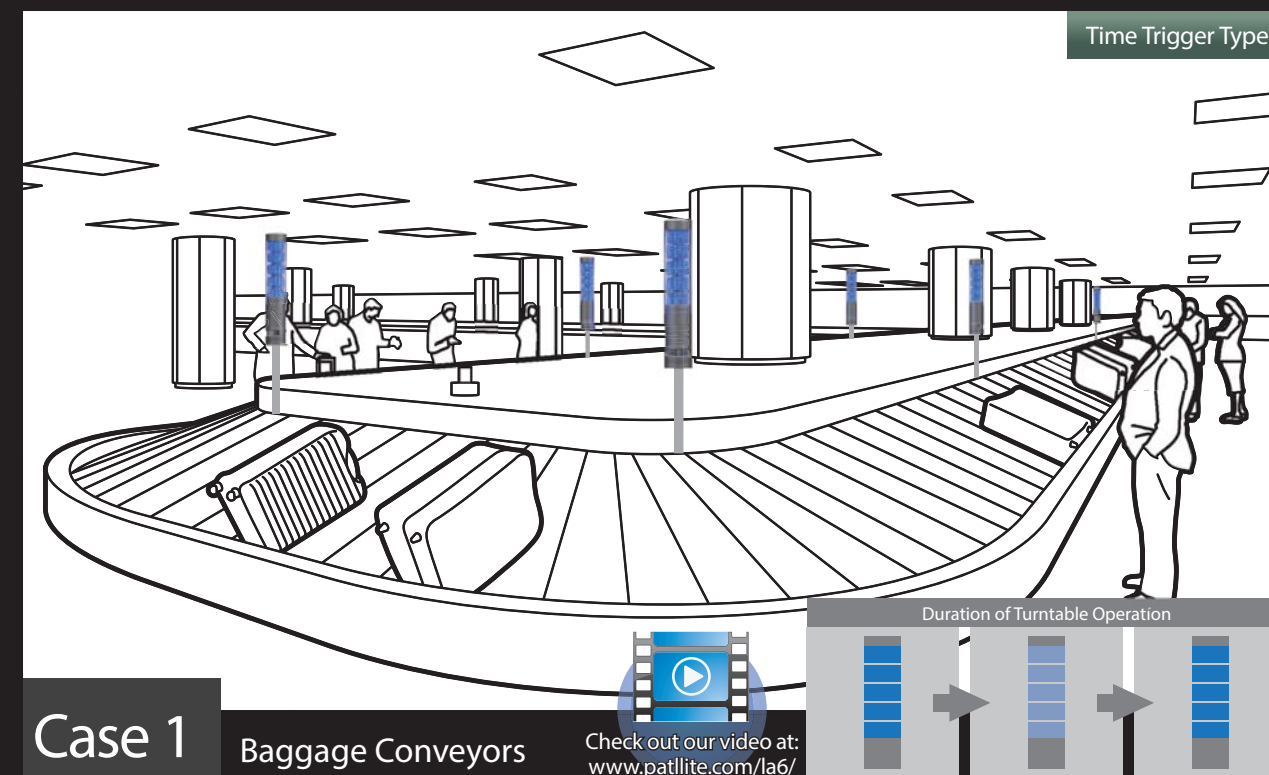
Check out our video at:
www.patllite.com/la6/

At the factory with many processing machines at work, the sign of trouble or periodic maintenance can be managed by displaying easily comprehensible color arrays to grasp the circumstance of all equipment in a diverse "luminescence color", and stabilize their operation. If an abrupt increase occurs, quick action based on information already displayed can be determined.

Lighting Method: "Detailed Error Display"

The level of information (serious error, slight error) can be expressed colorfully.

See "intuitive communication", "quiet communication", and "confident communication"



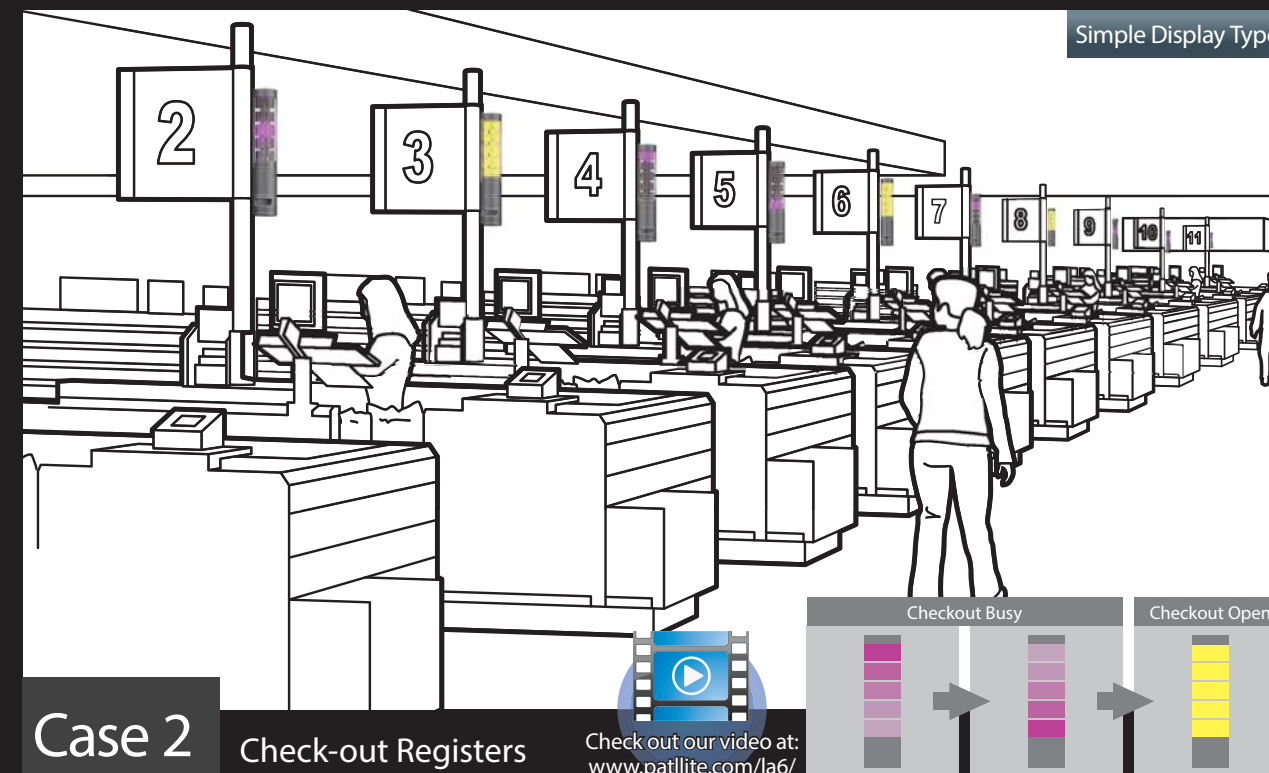
Case 1 Baggage Conveyors

Check out our video at:
www.patllite.com/la6/

While a conveyor turntable operates in baggage claim, accident prevention can lead to service improvement, such as easily making a distinction between boarding machines in a luminescence color matching each airline image.

Lighting Method: "Sine Curve Display"

Like a gentle firefly, a subtle operation to shine, rather than flash an operation status.



Case 2 Check-out Registers

Check out our video at:
www.patllite.com/la6/

In a larger supermarket, the congested state of a register can be displayed by a color. It visually shows a customer to move intuitively to a vacant register. Moreover, it can also nonchalantly transmit various forms of informative signals from a cashier to another employee with a luminescent pattern or color expression.

Lighting Method: "All-point Lighting Display"

When checking out at the register, it can display in a flowing operation, and when it is vacant, a smooth guidance with "All-point Lighting" can be used.



An internal Mode Switch is available. Use the internal mode switch to easily set up various functions, such as the alarm volume.



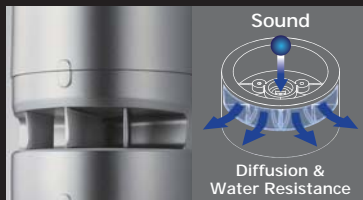
A new lens design optimizes visibility. The newly developed lens design efficiently diffuses LED light so that it is unmistakably visible, even from great distances.



Freely change luminescence colors and patterns with editing software.

Upload colors and patterns using the editing program to the signal tower using a USB cable* connected to a PC.

* The USB cable is sold separately (USB microB type with Charging/ Data Transfer capability).



The alarm has a total of 11 sounds to match various applications.

The water-resistant speaker design is able to play clear sounds of up to 85 dB (at 1m) despite its compact size. Alarm sounds can be set up with every display pattern.



Replacement Parts



- Headcover
(Off-white) B31310001-7F1
(Silver) B31310001-9F1



- USB Port Cover
(Off-white) B22100071-7F1
(Silver) B22100071-9F1



- Waterproof Ring 'B'
B25110042-F1



- Pole Bracket
(Off-white) B22210134-7F1



- Waterproof O-ring
B25110047-F1

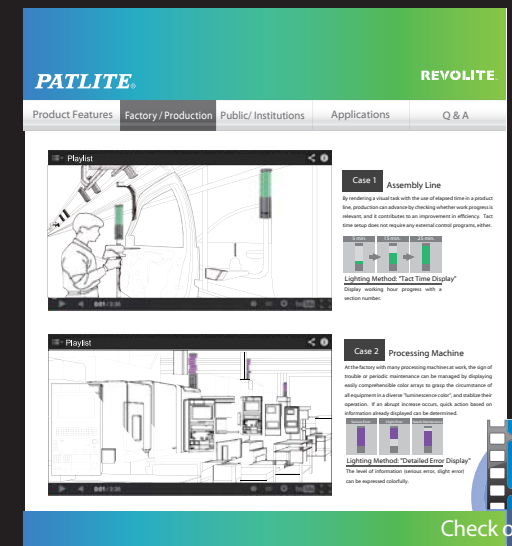
View our videos at our exclusive site for more information.

Features and various product operation modes can be viewed at our exclusive site (www.patlite.com/LA6). The contents introduce actual applications, ideas for applications, and wide-spread potential for this product.



Exclusive Site/ Top Page

* The website design may change without notice.



Exclusive Site/ Application Page

Check out our video at:
www.patlite.com/la6/

Easily set up an operation pattern.

1. The "Smart Mode" uses various colors to display information

A. Single-display Type

31 luminescent patterns are stored in the unit's memory and can be set to on/off for 1-5 tiers.



B. Time-trigger Type

Up to 15 groups of up to 63 patterns can be controlled as a continuous flow based on preset times.



C. Pulse-trigger Type

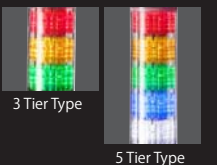
Pulse-trigger Type is activated by discrete inputs instead of time to progress from one pattern to the next, for up to 63 patterns. These can be grouped for up to 15 groups.



2. "Signal Tower Mode"

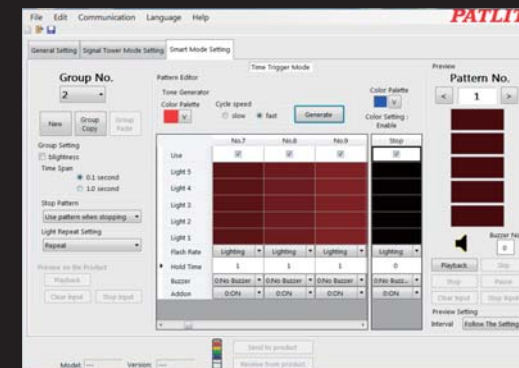
This mode simply displays information like a standard Signal Tower.

Four new color selections are available in addition to the five standard luminescence colors.

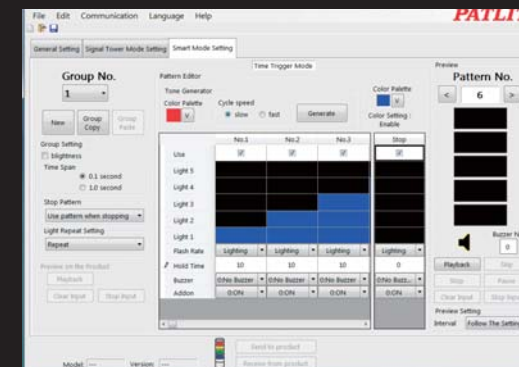


Set-up data can be downloaded.

Several pre-programmed patterns can be uploaded to the unit from the "Information Set."



Dedicated software setup screen



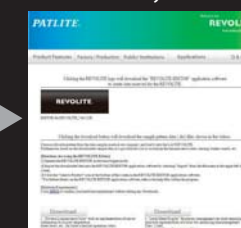
* The interface design may be changed without advanced notice.

Free color sample pattern data files (.dts) can be downloaded from our exclusive website.

Use our free and simple editing software to modify the free color sample pattern files.



1. Go to our exclusive website



2. Download the Dedicated Software from the website



3. Choose a favorite color pattern from the data sample



4. Download and import the data into the REVOLITE editor.

REVOLITE™

• 3 Tier Type



• 5 Tier Type



Signal Tower LA6

- Voltage: DC24V
- Alarm: 11 Sounds
- Wiring: 3 types
TN: Screwless Terminal
LJ: Cable & Pole
WJ: Cable

